

Transportation Comparison:

By Car	To Current Church Site 10 min.	To New Church Site
From WEM	10 min.	10 min.
From Downtown	14 min.	24 min.
From UOA	11 min.	16 min.
By Bus	To Current Church Site 10 min.	To New Church Site
From WEM	5 min. + 7 min. walking from bus stop.	8 min. + 3 min. walking from bus stop
From Downtown	31 min.	59 min.
From UOA	40 min.	65 min.

Site Coverage Comparison & Future Development Potential:

Land area of new church site	(approx.) 12 acres
LESS church building, parking space, Storm water management and 199 Street road widening (As per City of Edmonton specification)	- 7.5 acres
	4.5 acres (40%)

Praise the Lord, this means we have another 40% of land - 4.5 acres (40%) - available for future development. (*See point 9 above). In comparison, our current church site of 0.68 acres is fully occupied with no potential for future development.

Prayer Requests:

1. Pray for the review of the new church layout by our church members, so that we will have a unity of heart and a forbearing spirit as we look to one another's needs.

2. Pray for the pastors as they encourage each congregation rightly through God's Word to build together in responsive obedience to glorify God.

3. Pray for the building committee and HAI architects as they complete the initial drawings (40-50%) before applying for the building permit. Pray also for a more exact estimate of the construction cost of the project.

4. Pray that wisdom and perseverance be granted to the Building Committee members in representing each

congregation in the ongoing communication process. Remember their witness at work and family responsibilities.

5. Pray for 3 important upcoming dates:

- 1) Town Hall meeting on December 1st, 2013
- 2) Advance voting on December 8th, 2013
- 3) GMM 2013 Design vote on December 15th, 2013

We need a 75%+ vote to carry the motion to accept the 2013 design as presented in this Newsletter.

6. Pray for each church member to grow in the love and knowledge of Christ. That we may respond to His call with one heart and one voice, "HERE I AM - BUILDING TOGETHER FOR ETERNITY."

Building Together in Responsive Obedience to God's Providence



As we build together, we walk a fine line between providing enough space to facilitate ministry growth in all four congregations and keeping the building cost as low as possible.

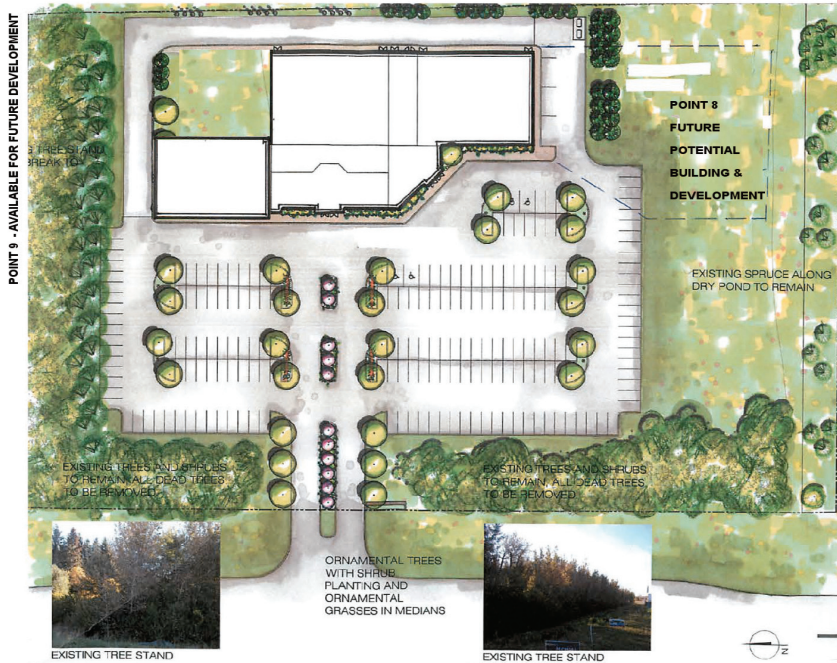
We believe this is a healthy tension which will press us towards God for greater wisdom and unity of hearts. God has graciously provided land and finances for us; let us build in responsive obedience to His providence.

The building committee has taken into account feedback from all four congregations, and they are tirelessly striving to be good stewards of our finances.

Number of Ministry Space	Name of Ministry Space	Seating / People Capacity
198	Paved Parking Stalls	4 - 5 persons/car = 792 - 990 people
1	Main Sanctuary	460 plus seats
1	Auxiliary Hall (Suitable for AWANA, TREK or other large meetings)	340 plus seats (less seating due to mother's room, nursery bathroom, and AV dock included in this area)
1	Foyer / Café Area	300 plus people
8	Offices	3 - 4 people per office
16	Classrooms	20 plus people per classroom (when 2 classrooms are combined, this will allow for 40 plus people per large classroom)
1	Kitchen	
1	Storage	
8	Washroom Areas 1 - Men 1 - Women 2 - Toddler 2 - Nursery 2 - Education wing	Men: 7 stalls Women: 13 stalls Toddlers: 2 stalls Nursery: 2 stalls Education wing: 5-6 stalls

Where will you and your family serve and be served? How will you grow in our new Spiritual Home? May God bless you with His vision for our church family.

Highlights of a Functional Church Building



1. The new church will be situated on ground level. There is no basement and no stairs in the church.
2. With one level, the risk of falling is reduced for members with reduced mobility such as seniors, young children, or parents carrying babies. It will be a safe and an accessible church for all.
3. Our new church will be wheelchair accessible throughout the premise, including the men's and ladies' bathrooms.
4. We will have a secure check in/out system for the children ministry area.
5. We will have an energy efficient building.
6. We will not have to pay rent for classrooms, gym or parking space.
7. We will be able to facilitate community outreach activities, eg. Pre-natal classes, Bible study programs, Tai-Chi classes, ESL classes, Fitness program, Mom & Toddler programs, and so much more.
8. In the future, we have the potential to build onto the south end of the lot (eg. additional sanctuary and gym). It is indicated as lawn space on the 2013 design, thus, some ground work will be completed.
9. In the future, we have the potential to build onto the north end of the lot (eg. Senior or Children Daycare centers)*. No ground work will be completed as per 2013 design.

